

Canadian Centre for Climate Change and Adaptation

Xander Wang, Ph.D., P.Eng.

School of Climate Change and Adaptation

University of Prince Edward Island







**UPEI Main Campus
Charlottetown**

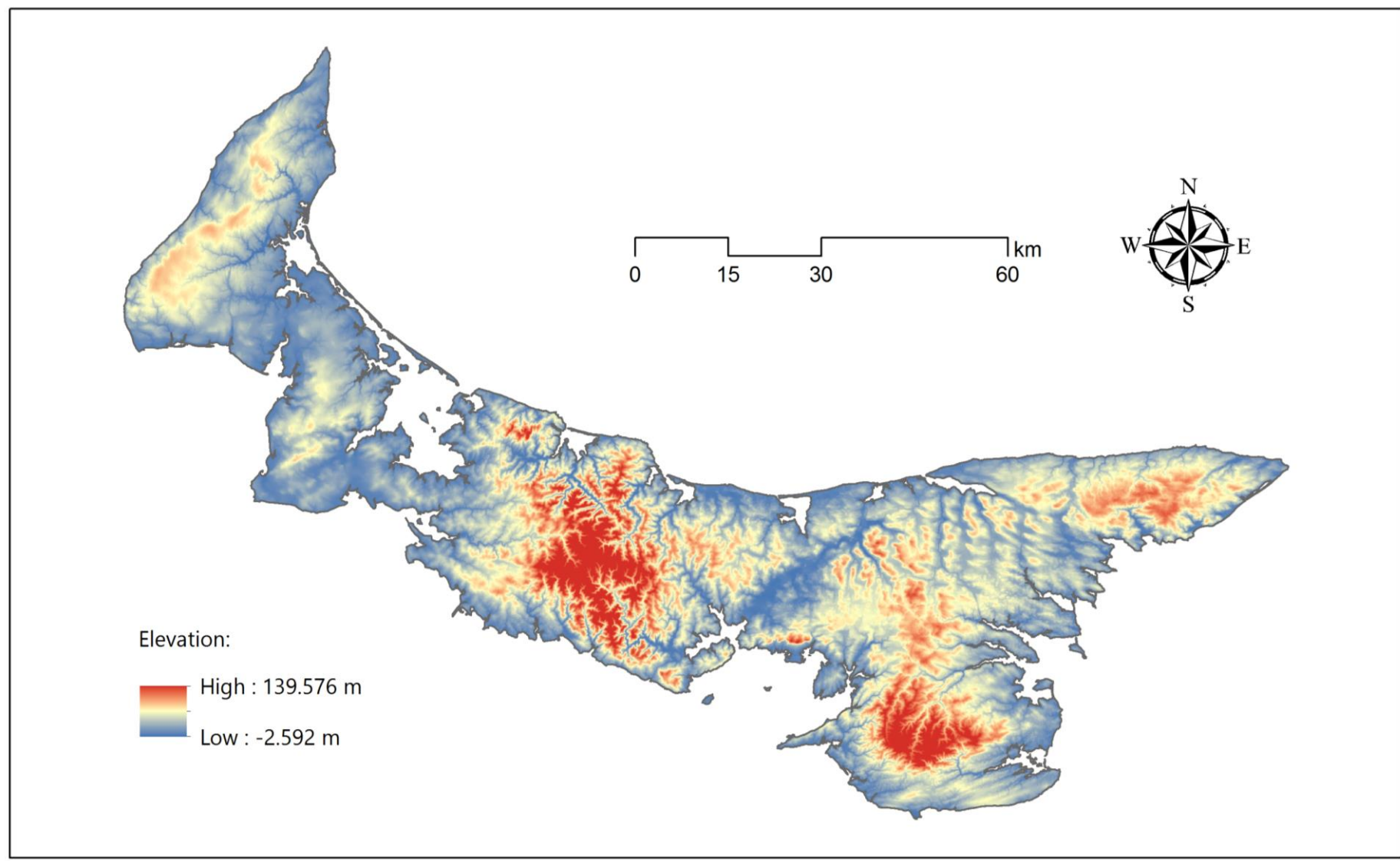
**Canadian Centre for Climate
Change and Adaptation
St Peter's Bay**

UPEI's Canadian Centre for Climate Change & Adaptation

A leading research and teaching cluster in climate change monitoring, modeling, impact assessment, and adaptation.



DEM for Prince Edward Island



Climate Change in Coastal Regions

PEI is extremely vulnerable to climate change!

Sea Level Rise



Source: <http://www.gov.pe.ca>

Coastal Flooding



Source: USA Today

Erosion



Source: Don Jardine

Storm Surge



Source: Don Jardine



Bachelor of Science in Applied Climate Change and Adaptation

YEAR 1

PROGRAM-SPECIFIC COURSES

ACC 1010 Introduction to PEI's Living Climate Lab
ACC 2030 Indigenous Knowledge in Climate Change and Adaptation

GENERAL COURSES

CHEM 2020 Environmental Chemistry
CS 1510 Introduction to Computer Science
ENV 1010 Introduction to Environmental Studies
MATH 1910 Introduction to Variable Calculus I
PHIL 2030 Environmental Philosophy

One of the following electives:

BIO 1010 Current Issues in Environmental Biology
CHEM 1110 General Chemistry I
PHYS 1210 Physics for Life Sciences I

One of the following electives:

UPEI 1010 Writing Studies
UPEI 1020 Engaging Ideas and Cultural Context
UPEI 1030 Engaging University Contexts and Experiences

One of the following electives:

ECON1010 Introductory Economics
ENG 2050 Critical Approaches to Texts I
HST 1010 Canadian History-Pre-Confederation

YEAR 2

PROGRAM-SPECIFIC COURSES

ACC 1020 Introduction to Community Climate Program Technologies
ACC 1030 Surveying Cultural Landscapes in the Environmental Humanities

GENERAL COURSES

BIO 3270 Field Coastal Ecology
ENV 3210 Natural Hazards
ENV 3110 Understanding Climate Change
PHYS 2610 Energy, Environment and the Economy
POLS 2020 The Politics of Climate Change and Adaptation
STAT 2210 Introductory Statistics I

One of the following electives:

PHIL 1050 Technology, Values and Society
PSYC 1010 Introduction to Psychology I
SOC 2550 Science, Culture and Society

One of the following electives:

BIO 2050 Microbiology
ENV 2120 Earth Physical Science
STAT 2220 Introduction to Statistics II

YEARS 1 – 2

Years 1 and 2 will be delivered through lectures, coursework, and labs at the UPEI campus in Charlottetown, PEI.

YEAR 3

PROGRAM-SPECIFIC COURSES

ACC 3010 Global Climate Change Vulnerability and Adaptation
ACC 3020 Climate Future and Modelling
ACC 3030 Climate Change Surveillance
ACC 3040 Climate Change Statistics in R
ACC 3050 Renewable Energy and Clean Technologies
ACC 3060 Visualization of Climate Change
ACC 3090 Geographic Information Systems for Climate Change
ACC 3100 Climate Change Impacts on Biodiversity
ACC 3120 Climate Change Management and Adaptation in Canada
ACC 3140 Business Risk Assessment Under Climate Change

YEARS 2 – 4

Two Work Integrated Learning experiences for students will take place over eight-week periods during the summers between years 2 and 3 (ACC2150), and years 3 and 4 (ACC350). These experiences are paid and for credit within the 127-credit Applied degree. They may take place locally, regionally, nationally and, potentially, internationally through a flagship partnership being developed with Parks Canada.

YEARS 3 – 4

Years 3 and 4 will be delivered through small group projects, labs, community learning, and field courses—the latter of which will be delivered in partnership with The Smithsonian Institution, a UPEI learning and research partner—at UPEI's satellite campus, the UPEI Greenwich School of Climate Change and Adaptation, being established at the Prince Edward Island National Park-Greenwich site in the St. Peters area of PEI.

YEAR 4

PROGRAM-SPECIFIC COURSES

ACC 3080 Reducing Greenhouse Gas Emissions
ACC 4010 Oceans, Coastal Systems and Climate Change
ACC 4020 Uncertainty and Probability in Climate Change
ACC 4040 Computer Programming to Visualize Climate Change
ACC 4050 Measuring Your Carbon Footprint through Carbon Accounting and Carbon Trading
ACC 4070 Climate Extremes
ACC 4080 Climate Change Impact and Adaptation
ACC 4090 Climate Change and Sustainable Tourism
ACC 4110 Climate Change and Human Health
ACC 4120 International Climate Diplomacy

EMPLOYABILITY SKILLS gained include:

- Piloting **drones** safely in gathering data for application in environmental science;
- Programming **virtual reality** environments using **UNITY** software;
- Using a **geographic information system (GIS)** to answer questions spatially
- Statistically analyzing data using **R software**
- Installing a **climate station** and other instrumentation
- Operating a **Real Time Kinematic (RTK) global positioning system** for precision locating
- Using output from global climate change models for **predicting future climate**
- Examining **climate observations** to understand past climate change trends
- Negotiating** an international environmental agreement
- Measuring your **carbon footprint** using Canadian Standards Association (CSA) and International Standard Organization (ISO) protocols
- Establishing biodiversity monitoring plots using standards developed by the Smithsonian Institution
- Working with **businesses, industries and governments** in addressing environmental issues
- Preparing applications under **Environmental Assessment** legislation
- Conducting **climate change impact assessments** using methods recommended by the Intergovernmental Panel on Climate Change
- Directing **business risk analyses** in an era of climate change
- Conducting **environmental audits** in keeping with industry standards



Learning with Innovative Technologies

- Small Unmanned Aerial Vehicles or Remotely Piloted Aircraft Systems
- Real Time Kinematic (RTK) Global Positioning Systems (GPS)
- Living Shoreline Coastal Armoring
- High-Performance Computing for Climate Modeling
- Big Data Analytics and Machine Learning
- ...

Research Expertise

- High-resolution climate modeling
- Hydrological and flood modeling
- Energy systems modeling under climate change
- GIS, remote sensing, and drone technologies
- Precision agriculture and food security
- Big data analytics and machine learning
- Nature-based climate adaptation solutions
- Climate policy and economic modeling
- ...

GIS- and Web-Based Climate Change Data Portal

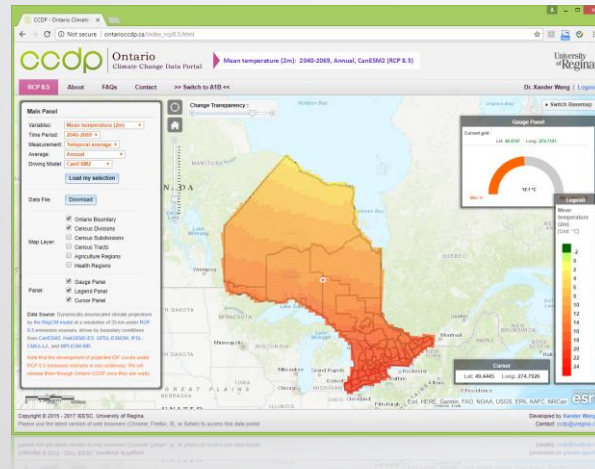
Canada CCDP
<http://canadaccdp.ca>



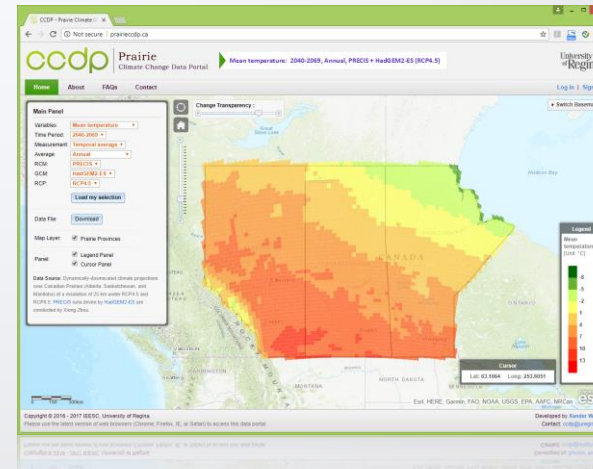
China CCDP
<http://chinaccdp.org>



Ontario CCDP
<http://ontarioccdp.ca>



Prairie CCDP
<http://prairieccdp.ca>



GIS- and Web-Based Climate Change Data Portal




Our goal is to cover all nations around the world.

GIS- and Web-Based Climate Change Data Portal

> 800

Registered Users

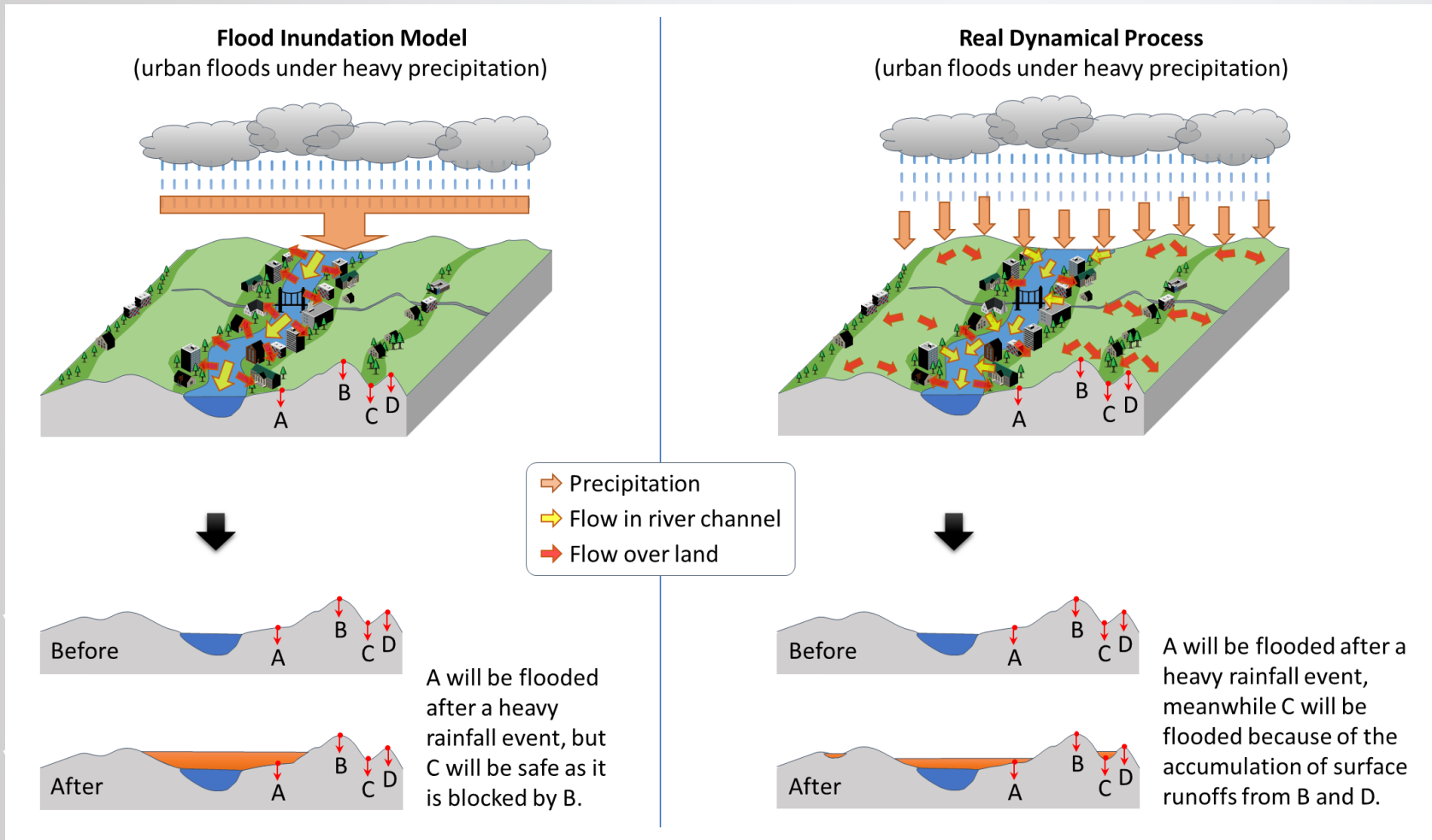


Inner Mongolia Normal University (China) Portland State University (USA)
Junior Academy (Japan) Institute for Clinical Evaluative Sciences Old 99 Farm BluEarth Renewables
CBCL Limited Stantec ICLEI Canada University of Cape Town Synthesis Agri-Food Network
Athabasca Consulting École polytechnique fédérale de Lausanne (Switzerland) Northwestern Health Unit
University Ltd. The University of LSRC Nottawasaga Valley Conservation Authority MORR Consulting
Beijing Normal Brock University British Columbia Matrix Solutions Lower Trent Conservation Jacobs (USA)
University (China) Canadore College Monash University (Australia) Brock University Environment Canada Lucente Engineering
Public Health Sudbury Credit Valley Conservation Authority Quinte Conservation Health Canada
Harmony Solutions Esri Canada RWTH Aachen University (Germany) McMaster University Dickinson College (USA)
Algonquin College Cizek OCCIAR City of London QPC Consulting University of Michigan (USA)
Emmons and Olivier Environmental University of Guelph SENES Consultants University of Windsor
Resources (USA) Services University of Waterloo Dillon Consulting Carleton University McGill University
Golder Associates Town of Oakville York University Queen's University Hydro One Northern Ontario
BGC Engineering Inc. University of Swaziland University of Toronto Green Analytics Trent University School of Medicine
Western University City of Brampton
Fleming College OMAFRA City of Waterloo YPDT-CAMC MMM Group Aquafor Beech Limited
University of Manitoba Georgian College Great Lakes and St. Ontario Climate Consortium AECOM Memorial University
Lakehead University Lawrence Cities Initiative Ontario Ministry of Agriculture and Food
Natural Resources Canada Muskoka Watershed Council Drainage Investment Group Curve Lake First Nation
Invasive Species Centre Ministry of Transportation of Ontario Haldimand County Ontario Public Service
Simon Fraser Environment Norfolk County Town of BWG / Municipal Services Board Wilfrid Laurier University
University and Climate S.F. Pope Sustainability Consulting D.M. Wills Associates Limited University of Regina
Change Canada Ontario Forest Research Institute Ganaraska Conservation Université de Neuchâtel
KMUTT (Thailand) Hutchinson Environmental Lower Trent Conservation University of Ottawa (Switzerland)
Sciences Ltd. The Municipal Infrastructure Group Ltd. C. C. Tatham INRA (France)
ICMMG RAS (Russia) Institute for Agriculture Danang University (Vietnam)

> 70,000

Downloads

Urban Flood Prediction Under Heavy Rainfall



A New Model
can be applied to any
urban settings.

Energy Systems Modeling Under Climate Change

**Input-Output
Tables**

**Climate Change
Scenarios**

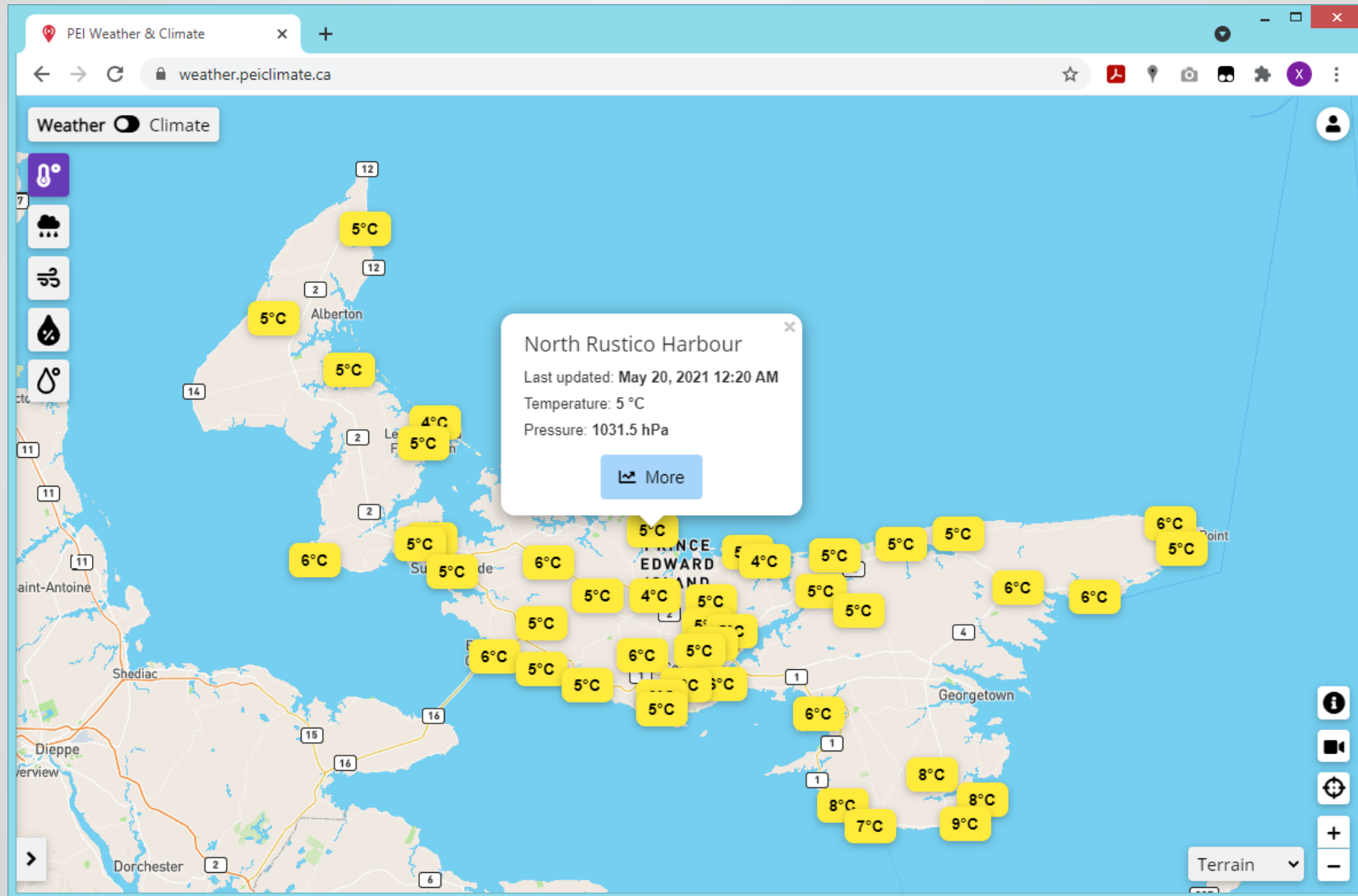
**Optimization
Models**



**To help find effective carbon
reduction policies: carbon cap
and trade, carbon tax, or others.**

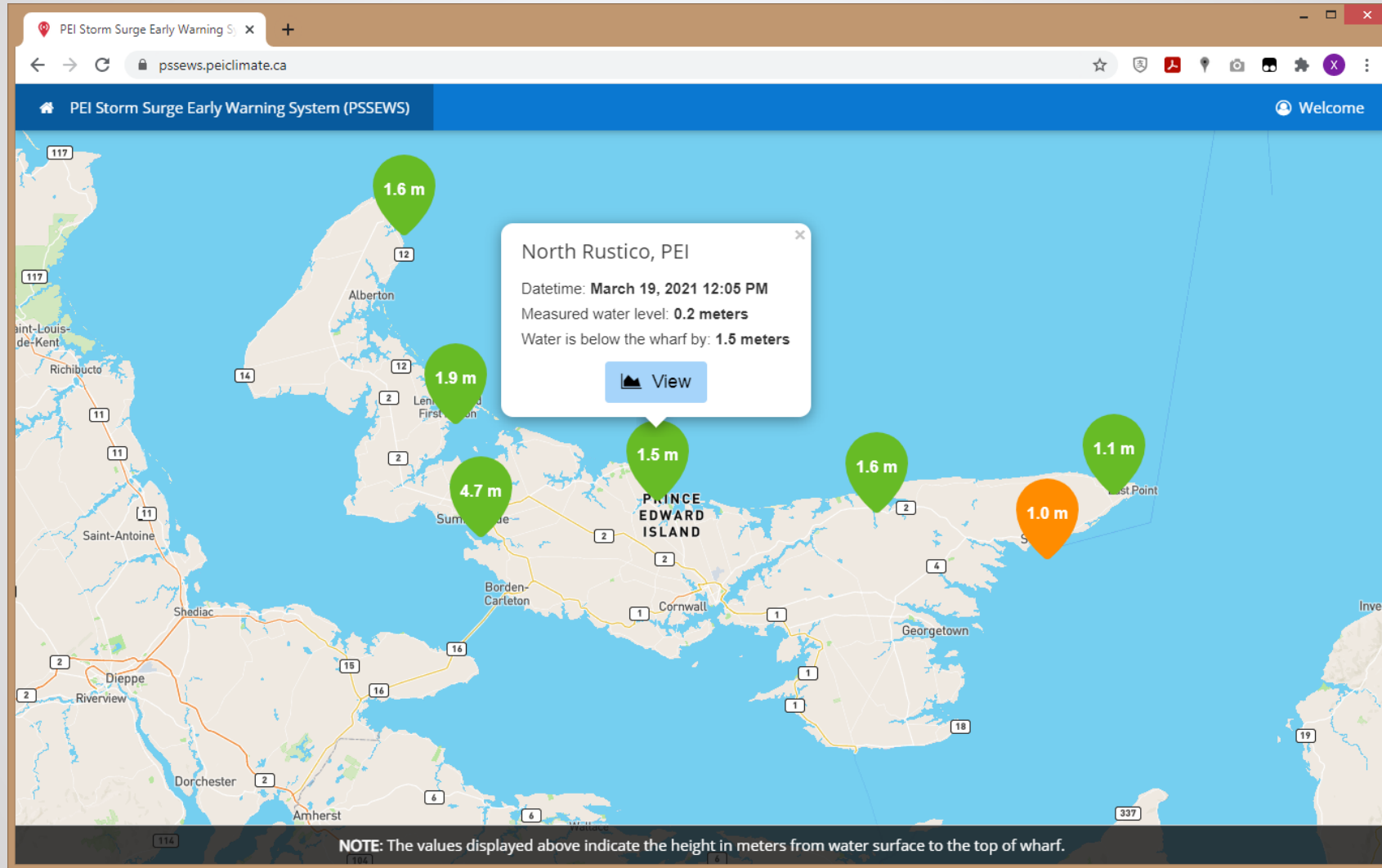
PEI Weather & Climate App

Website: <https://pssews.peiclimat.ca>



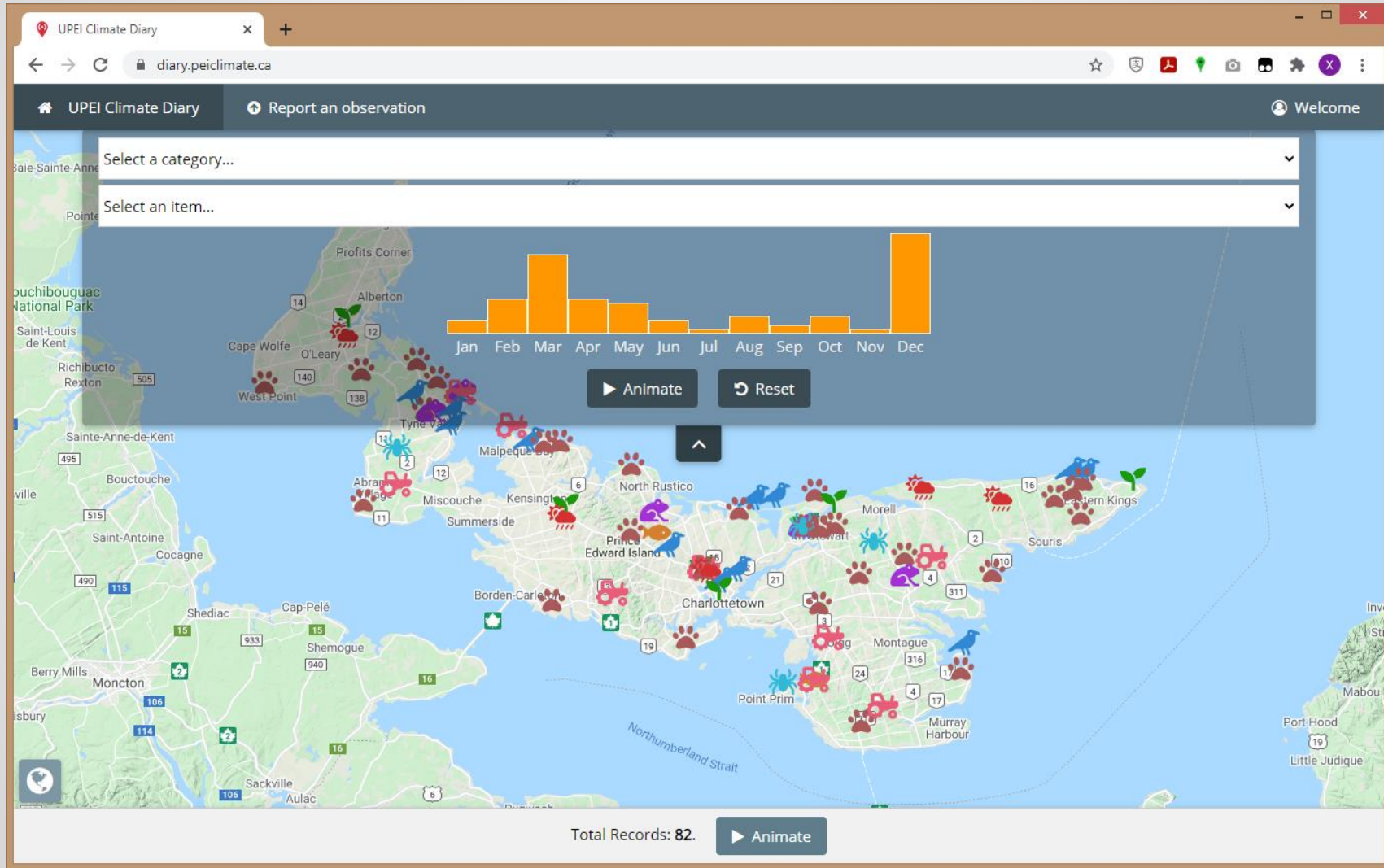
PEI Storm Surge Early Warning System

Website: <https://pssews.peiclimat.ca>



PEI Climate Diary App

Website: <https://diary.peiclimat.ca>



Thank you very much.

Email: xxwang@upei.ca